

## DAMAGE-FREE FOAM SOLUTIONS

### LARGE CORE-CELL FOAM

Certain applications require foams with specific physical properties. We know that open-cell foams have high water absorbency and high recovery, whereas our closed-cell foams have low water absorbency and low recovery.

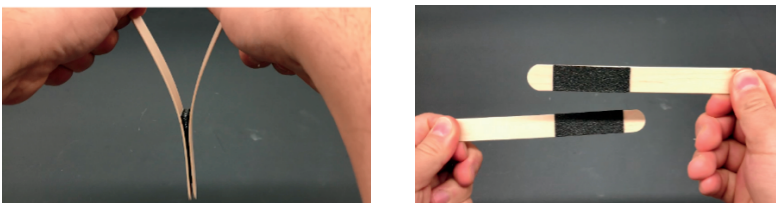
We developed and patented this one-of-a-kind, large core-cell foam to offer both high recovery and low water absorbency. (see Figures 1, 2, 3)

#### ADDITIONAL FEATURE

The large core-cells provide an additional benefit of easy-splitting down the center of the foam. Below is an example of a splitting test performed on 4 pcf 0.080 in (64 kg/m<sup>3</sup> 2 mm) closed-cell foam.



The foam's durability held strong while the stick breaks, creating possible damage to the substrate.



Performing the same test using 4 pcf 0.080 in (64 kg/m<sup>3</sup> 2 mm) large core-cell foam, the foam easily splits leaving the stick intact, providing a damage-free solution.

To see if this innovative foam would be a solution for your application, contact our Research and Development Manager at [Keigo.Shimura@sekisuivoltek.com](mailto:Keigo.Shimura@sekisuivoltek.com).

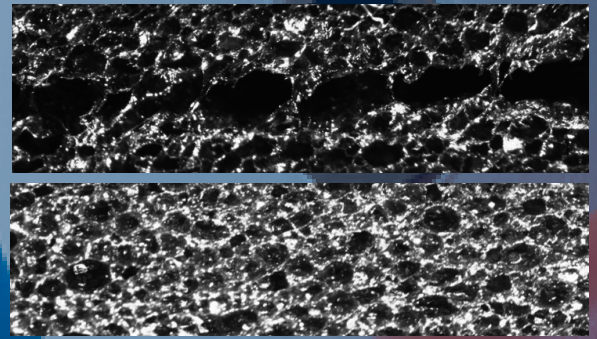


Figure 1 (top: large-core cell, bottom: closed-cell)

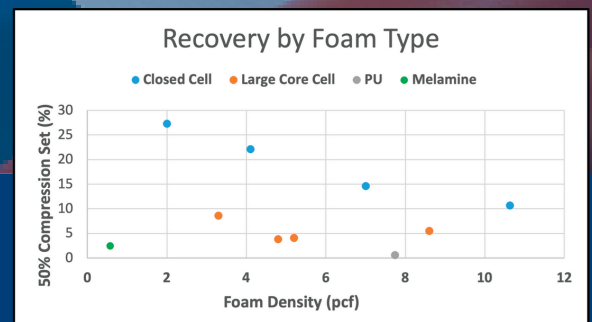


Figure 2

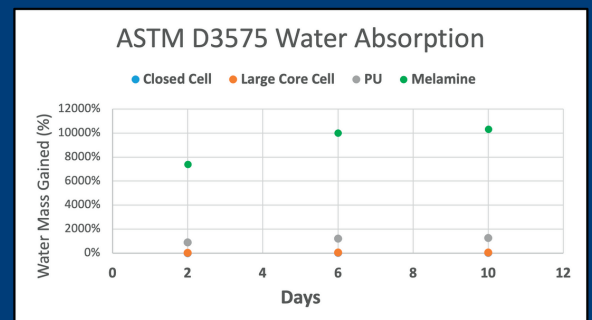


Figure 3

#### POSSIBLE APPLICATIONS

- Gaskets
- Tamper-proof packaging
- Damage-free construction
- Warranty protection by restricting access and/or prove tampering to equipment service areas