

THERMOBREAK[®] Thermaloc

HOT & COLD PIPE SUPPORTS



Thermobreak[®] Thermaloc is a lightweight and extremely tough closed cell polyethylene foam pipe support.

- Lock together profile decreases installation time and ensures airtight finish
- Closed cell will not absorb moisture or degrade over time
- Does not erode with pipe movement
- AS1530.3 compliant foil faced

SEKISUI

FOAM
INTERNATIONAL
Global Foam Solutions

PHYSICALLY
CROSSLINKED
SEKISUI TECHNOLOGY

THERMOBREAK[®] Thermaloc

HOT & COLD PIPE SUPPORTS

Product Features

Thermaloc is light weight and extremely tough. Just place the two pieces over the pipe, squeeze together gently, and apply AS1530.3 approved foil tape ensuring complete coverage

Compliance with BCA Fire Hazard Properties

Thermaloc complies with the Building Code of Australia (BCA) specification C1.10 Fire hazard properties for materials used in Class 2 - 9 buildings.

Quick, Easy & Safe Application

No more cutting. This ensures a flat surface to butt insulation against, allowing a tight and secure joint. No fibers, no dust, no mess to clean up afterwards. No special face masks or gloves required.

Contact Sekisui Foam Australia or your local agent for more information.

Size Availability

Wall Thickness Available

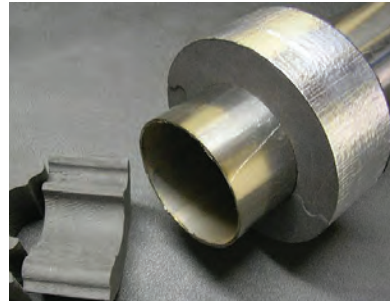
13mm, 15mm, 20mm, 25mm, 30mm, 40mm, 50mm, 55mm, 63mm and made to order wall thickness and ID.

Length Along Pipe

The standard "on pipe" length is 50 mm. 75 mm is available on request.

Technical Data

Material:	Crosslinked Closed Cell PE Foam
Density:	300 kg /m ²
Moisture Absorption (by weight, room temp, 5 hrs)	<1%
Tensile Strength	26.4 kg/m ²
Tear Testing	8.3 kg/m ²
Thermal Conductivity (ISO8302-1991)	0.065 W/mK
Constant Working Temperature	-40 °C to 105 °C
Compressive Strength JIS 6767	3.4 kg/cm ²



Benefits

Built in Loc

Once tightly taped, Thermaloc will prevent any air movement through the join. This is especially important in cold line applications to prevent potential air condensation

Tough & Durable

Thermaloc pipe supports are made of high density, crosslinked, closed cell polyethylene foam. As they are closed cell they absorb negligible moisture, and retain their insulation properties throughout the life of the installation.

Non Erosion with Pipe Movement

Pipes move with contraction and expansion, eroding the ferrule. The tough PE foam will resist movement and prevent gap formation over time.

Health & Safety

As the blocks are preformed there is no need for cutting, so there is no dust and no mess. They do not emit fibrous particles during installation or over time.

Performance Life

Thermaloc is closed cell and unaffected by water and humidity. This ensures continual performance over the life of the installation.

Chemical Resistance

Thermaloc is resistant to detergents, diluted acids, alkalis, alcohols, esters and fungi ensuring performance in even the most demanding applications.

Softlon and Thermobreak – Registered trademarks of Sekisui Chemical Co. Ltd or its subsidiaries.

SEKISUI | **FOAM**
INTERNATIONAL
Global Foam Solutions



Sekisui Foam Australia

Head Office
1-5 Parraweena Rd, PO Box 2898,
Taren Point NSW 2229 Australia
Tel: +61 2 9525 9880
Fax: +61 2 9525 8004
Email: info@sekisuifoam.com.au
Web: www.sekisuifoam.com.au

Queensland Branch

15/853 Nudgee Rd, PO Box 448,
Northgate QLD 4013 Australia
Tel: +61 7 3267 7100
Fax: +61 7 3267 7166
Email: info@sekisuifoam.com.au
Web: www.sekisuifoam.com.au